



Electrical Information			
Model No.	SL05-10	SL05-20	SL05-30
Power Consumption(ffl5%)	10W	20W	30W
Battery	LiFePO4 battery		
Battery Capacity	76.8Wh-6Ah	153.6Wh-12Ah	230.4Wh-18Ah
Solar Panels	Mono-crystalline solar panel		
Solar Panel Wattage	30W		
Charging Time	>3 Hrs	>6Hrs	>9Hrs
Operating Time	Normal mode with 100% brightness>8hours, Intelligent mode 3-4 days		
Solar Charge Controller	PWM		
Working Mode	Refer to intelligent control mode		
Control	Timmer dimming/PIR sensor		

Optic Information			
LED Type	LED 2835		
Luminous Flux (ffl10%)	2000lm	4000lm	6000lm
Efficacy(4000K Ra70)	200lm/W		
Correlated Color Temperature	4000K (3000K, 5000K optional)		
Color Rendering Index	Ra70 (Ra80 optional)		
Beam Angle	R10801, R10803, R10805		
UGR Level	NA		

Description

"Wagonway's Solar Fin is a game changer for Solar lighting. The all in one design with integrated solar panel, battery, smart controller, and motion sensor make this system easy to install and very reliable.

For Retrofit Projects

Our innovative hybrid Solar technology allows you to install lights that are primarily Solar powered but provide peace of mind with secondary electrical grid supply - a first for the US Solar lighting industry!

For New Projects

If you are looking for 100% Solar, without back-up power, now there is an economical and easy way to bring light to areas without access to electric grid."

Key Features

- Compact design; lightweight which makes installation simple.
- System efficiency up to 200lm/w with competitive price
- The controller has built in PIR sensor and timer dimming function
- The efficient LiFePO4 battery features extended life with an 8 hour charge can offer 3 days of operation.
- IP65 protection
- Mono-crystalline photovoltaic with a higher conversation efficiency
- Adjustable angle
- Different mounting options

Applications

- Village streets
- Urban road
- Courtyard
- Parking Lot

Dimensions and Mounting Options

Product Dimension (Side Entry)	31.7x11.9x5.8"		
Luminaire Net Weight	11.02 LBS	12.56 LBS	13.88 LBS
Export Carton Size	29.52x14.56x7.67"		
Gross Weight	15.87 LBS	17.41 LBS	8.5±0.3kg
Mounting Option	Post top mount/Side entry mount Pole clamp bracket mount/Wall mount		
Material	Aluminum alloy Polycarbonate optical lens LiFePO4 battery Mono-crystalline solar panel		
Finish	Powder coating		
Fixture Color	Silver		
EPA	2.56ft²/0.23m²		
IP Rating	IP65		
Category of corrosion	C3		

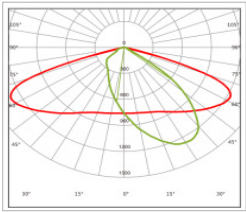
Lifespan and Warranty

Operating Temperature	0°C to + 50°C		
Life Time of LED @Ta=25°C	31000hrs-L90		
	64000hrs-L80		
	101000hrs-L70		
Warranty	Battery	3 Years	
	Other accessories	5 Years	

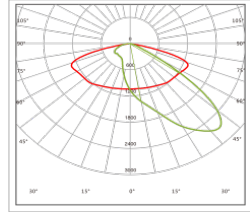
New Features

* Please consult us for details.

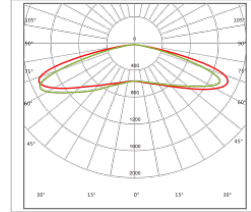
Photometry



A10801



A10803



A10805

Mounting Options



Side Entry Mount



Post Top Mount



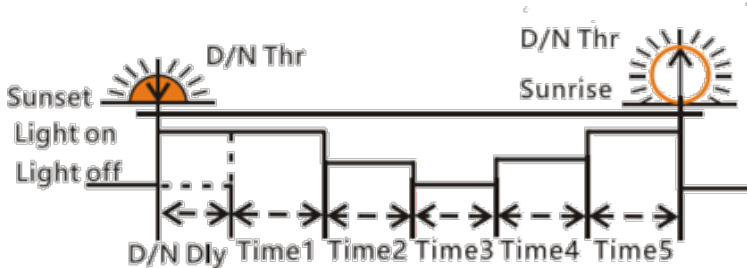
Pole Clamp Bracket Mount



Wall Mount

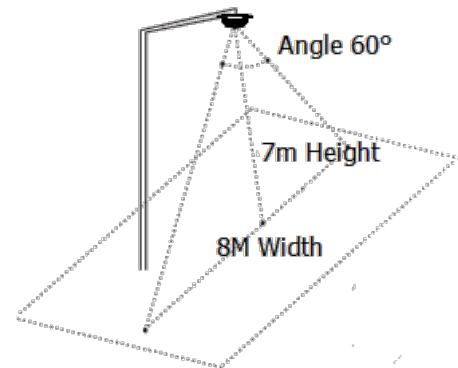
Intelligent Control Mode

5 Stage Night Mode



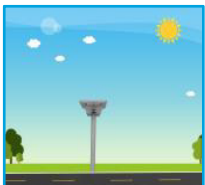
*You can note the Sensor function is only available at Time 3 and Time 4

*Please note the fixtures with 5 stages timer dimming yourself by the remote controller.



PIR Sensor Detect Areas

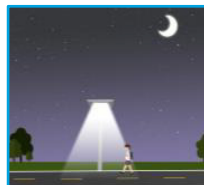
Factory Default setting



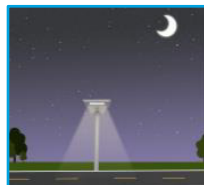
With sufficient natural light, the light keeps charging.



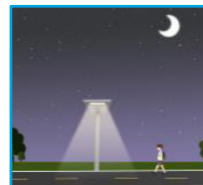
The light keeps 100% brightness for 0.5 hour.



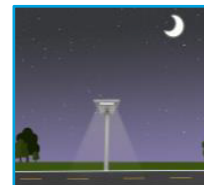
The light keeps 50% brightness when presence is detected in the 1st 4 hours.



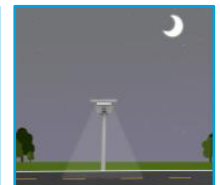
The light keeps 10% brightness when no presence is detected after 30S hold time in the 1st 4 hours.



The light keeps 20% brightness when presence is detected in the 2nd 4 hours.



The light keeps 10% brightness when no presence is detected after 30S hold time in the 2nd 4 hours.

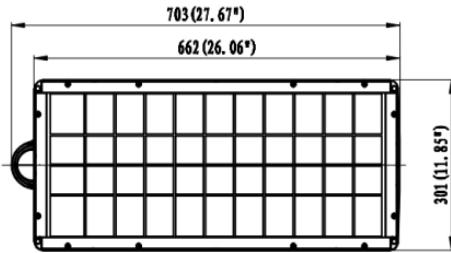
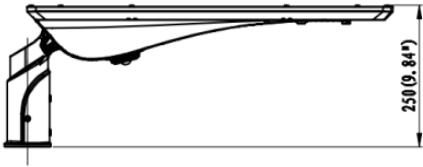


The light keeps 10% brightness for 3 hours until sunrise.

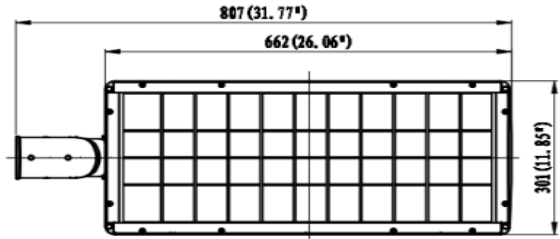
The Controller recognizes day and night based on the Solar Array Open Circuit Voltage, this day/night threshold can be modified according to local light conditions and the Solar Array Used, setting range 3.0 ~8.0V

Dimensions

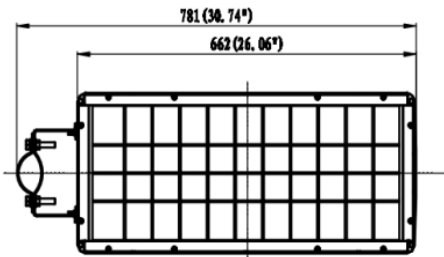
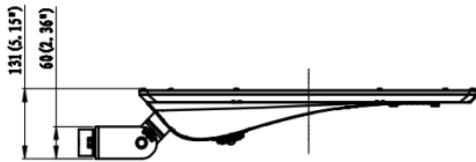
Unit: mm



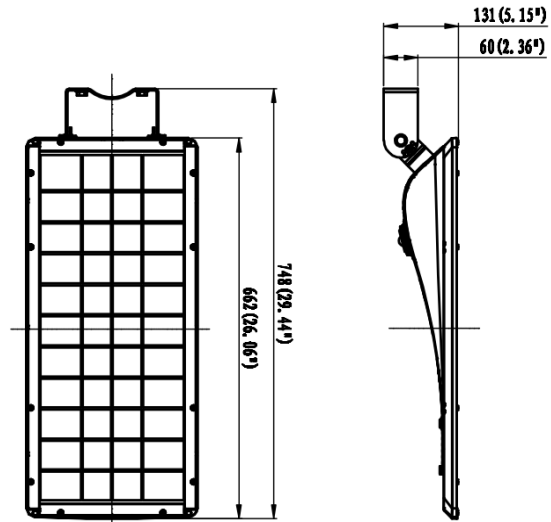
Post Top Mount



Side Entry Mount



Pole Clamp Bracket Mount



Wall Mount

Accessories



Optic lens

High transmittance PC materials,
UV test approval.



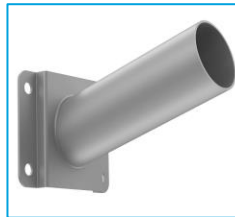
Pole mount spigot

ADC12 materials, $\pm 15^\circ$ tilt adjustable, for dia.34/
42/ 60/ 76mm pole.



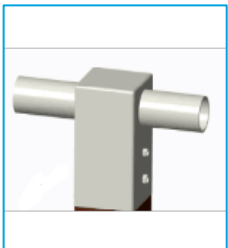
$\pm 30^\circ$ Pole Clamp Bracket
SPCC materials with outdoor powder coating,
can be also the wall mount bracket

Pole Clamp Bracket for 60mm/76mm Pole
Only.



Wall mount adaptor

Q235+SPCC materials with outdoor powder coating.



T shape pole mount adaptor

Q235 with Akzo Powder Coating materials, for
100x100mm square pole.



T shape pole mount adaptor

Q235 materials, for dia.60/ 76mm pole.



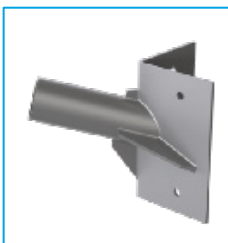
L shape pole mount adaptor

Q235 materials, for 100x100mm square pole.



L shape pole mount adaptor

Q235 materials, for dia.90mm pole.



Corner mount adaptor

SPCC materials with outdoor powder coating.



L shape pole mount adaptor

Q235 materials, for dia.60mm pole.



Remote Controller

Remote Controller for Solar Street light.