



## Description

High Bay-Select delivers high lumen output with various beam angle, making it ideal for high mounting application. The plug and play sensor helps to maximize energy savings. The innovative heat sink design minimizes heat while prohibiting dust accumulation. High Bay-Select is an excellent choice for high dust environments such as paper processing, chipboard, or steel processing. With a whopping 200 lumens per watt the Wagonway High bay Select is not just another pretty face! The streamlined microwave sensor will reliably sense activity and bring the fixture to full illumination and is fully programmable. Designed to inhibit dust accumulation, it has an impressive L70 of 31 years at 12 hours per day.

## Key Features

- No dust accumulation design, better heat dissipation.
- Built-in microwave motion sensor, looks much compact.
- Well-sealed with dust tight and waterproof rating of IP65.
- Multiple mounting options.
- High efficacy up to 200LM/W.

## Applications

- Warehouse
- Industrial Facility
- Exhibition Center
- Shopping Mall
- Gymnasium
- Airport
- Toll Station and so on

\* Lumen output and light distribution are only for reference. Not all product variations listed on this page are DLC Standard/Premium qualified. Visit [www.designlights.org/search](http://www.designlights.org/search) to confirm qualification.

## Electrical Information

Model No.	HB05-100	HB05-120	HB05-150	HB05-200	HB05-240
Power Consumption (±5%)	100W	120W	150W	200W	240W
Power Supply	MOSO				
Input Voltage	120-277 VAC 50 / 60 Hz				
Power Factor	>0.93				
Surge Protection	4kV line-line, 6kV line-earth				
Driver Type	Constant Current (CC)				
Control	Dimmable				
	Microwave Motion Sensor				

## Optic Information

LED Type	LED 2835				
Luminous Flux (±10%)	20000lm	24000lm	30000lm	40000lm	45600lm
Efficacy (5000K Ra70)	200 LM/W				190 LM/W
Correlated Color Temperature	5000K (4000K optional)				
Color Rendering Index	Ra70				
Beam Angle	H00108/H00111/H00115/H00121				
UGR level	<25				

## Dimensions and Mount

Product Dimension	φ360 x 186mm ( 14.17" x 7.32")				
Luminaire Net Weight	3.9±0.3kg (8.6±0.66Lbs)			4.3±0.3kg (9.47±0.66Lbs)	
Export Carton Size	428×428×225mm (16.85" x16.85" x 8.86")				
Gross Weight	5.3±0.3kg (11.68±0.66Lbs)			5.7±0.3kg (12.57±0.66Lbs)	
Mounting Option	Loop Hanging				
	Ceiling Mounting				
Material	Aluminum Alloy				
	Polycarbonate Optical Lens				
Finish	Powder Coating				
Fixture Color	Black				
EPA	NA				
IK Rating	IK08				
IP Rating	IP65				

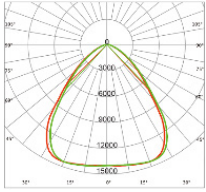
## Lifespan and Warranty

Operating Temperature	Normal: -30°C to + 50°C (-22°F to 122°F)				
	Motion sensor: 0°C to + 50°C (32°F to 122°F)				
Life Time of LED @Ta=25°C	40000hrs-L90				
	84000hrs-L80				
	134000hrs-L70				
Warranty	5 Years				

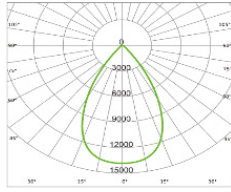
## New Features

\* Please consult us for details.

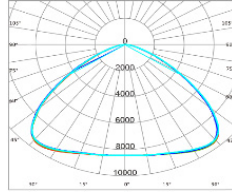
## Photometry



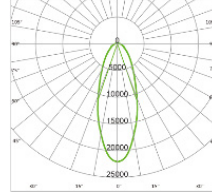
S00108  
(90° circular Lens)



S00111  
(60° circular Lens)



S00115  
(120° circular Lens)

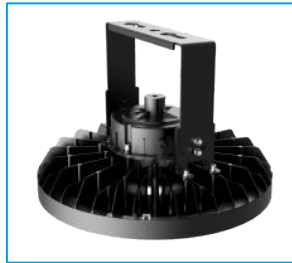


S00121  
(40° circular Lens)

## Mounting Options



Loop Hanging

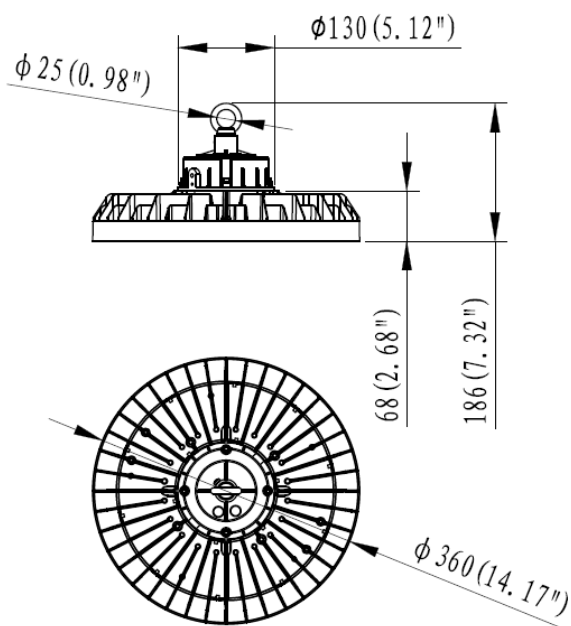


Ceiling Mounting

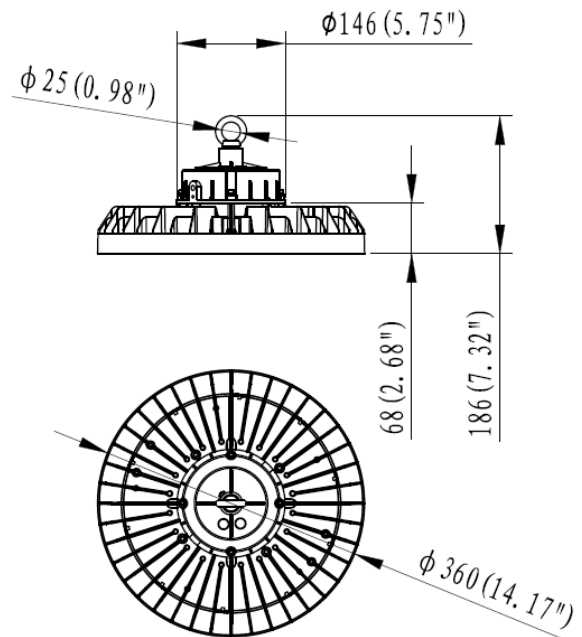


Pendant Mounting

## Dimensions



100W / 120W / 150W



200W / 240W

## Accessories



### Optic lens

High transmittance PC materials,  
UV test approval.



### Aluminium reflectors

Different beam angle, anti glare effect, black/silvery color options.



### PC reflector

90° PC reflector with lid.



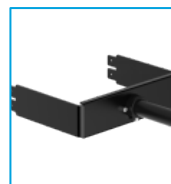
### Non adjustable bracket

SPCC materials with outdoor powder coating, Non adjustable.



### ± 60° adjustable bracket

SPCC materials with outdoor powder coating.



### Pipe mount bracket

support 3/4 NPT.



### Safety chain

304 stainless steel, available for 0.25m, 1m, 1.5m and 5m long.



### Plug-and-play microwave sensor

1pcs for each luminaire.